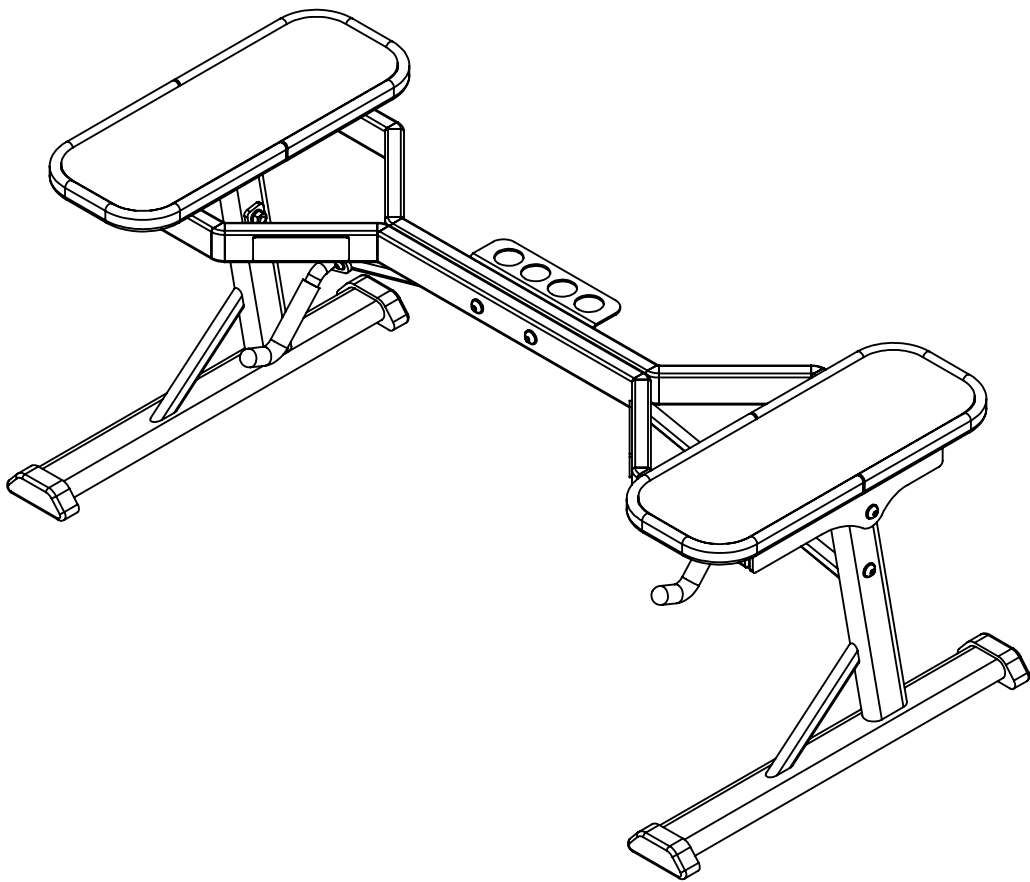


POWERBLOCK®

BARBELL STAND ASSEMBLY INSTRUCTIONS



POWERBLOCK®

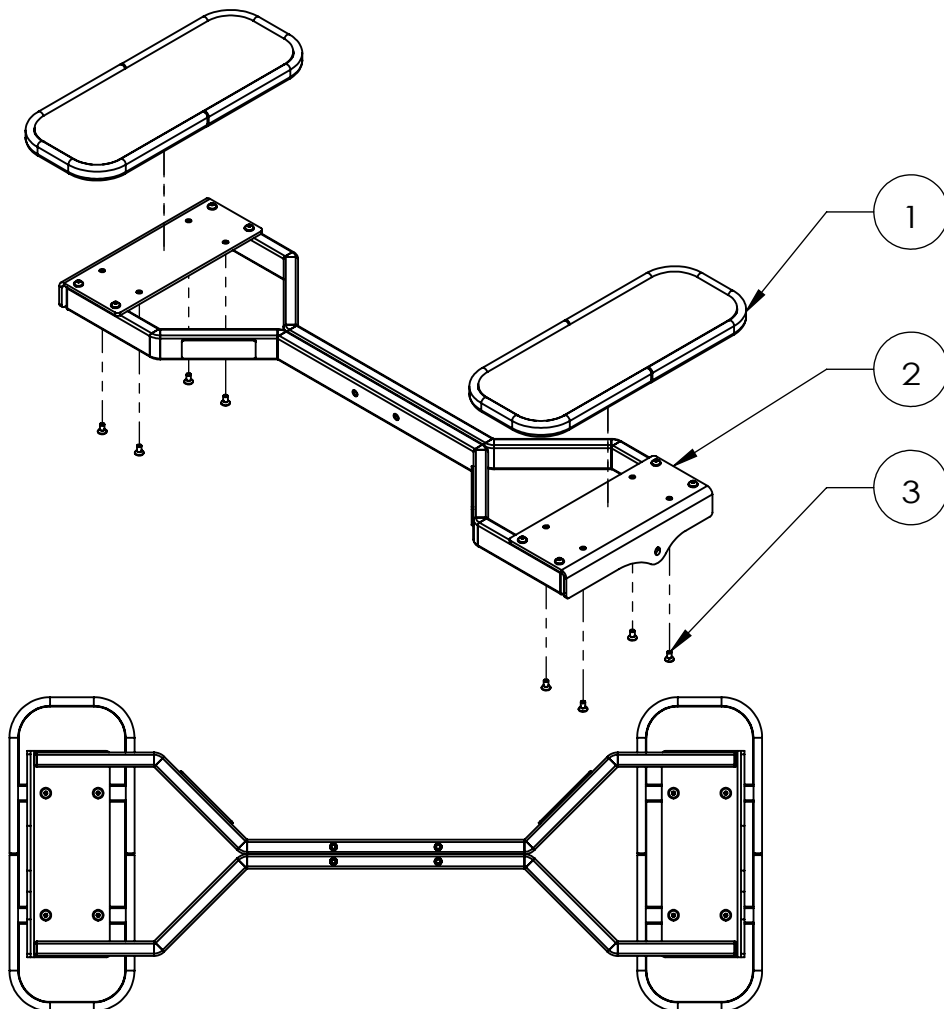
BARBELL STAND

ASSEMBLY STEP 1

ITEM NO.	DESCRIPTION	QTY.
1	TRAY TOPS	2
2	BARBELL STAND UPPER FRAME	1
3	M8 FLAT HEAD SCREWS	8

TOOLS NEEDED: 5 mm ALLEN WRENCH

1. PLACE THE TRAY TOPS (ITEM 1) UPSIDE DOWN AS SHOWN IN THE BOTTOM ILLUSTRATION.
2. ATTACH THE BARBELL STAND UPPER FRAME (ITEM 2) TO THE TRAY TOPS (ITEM 1) WITH THE SUPPLIED HARDWARE.
3. **TIGHTEN** THE HARDWARE.



POWERBLOCK®

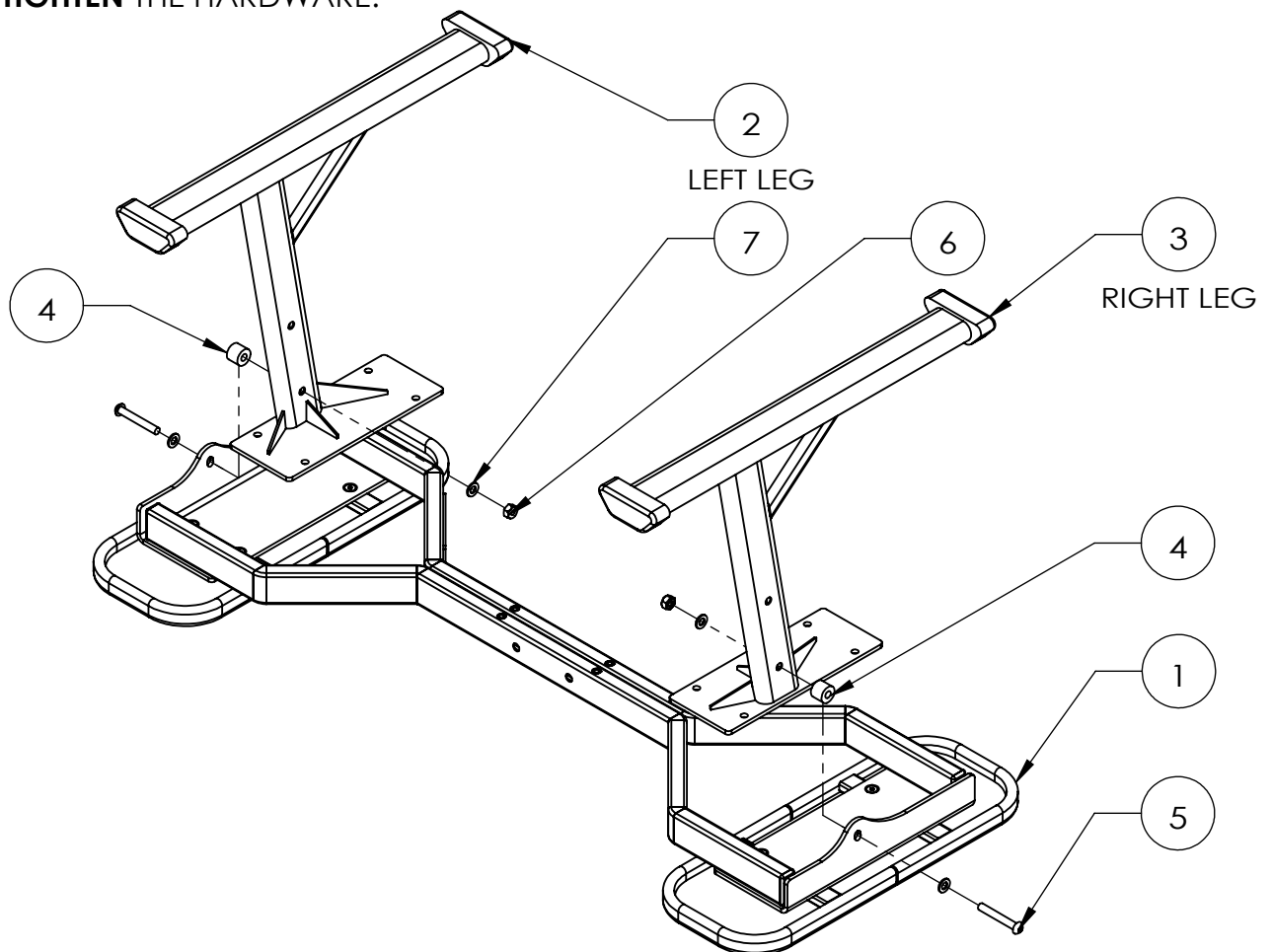
BARBELL STAND

ASSEMBLY STEP 2

ITEM NO.	DESCRIPTION	QTY.
1	BARBELL STAND UPPER FRAME ASSEMBLY	1
2	STAND LEFT LEG	1
3	STAND RIGHT LEG	1
4	STEEL SPACERS	2
5	M10 BUTTON HEAD SCREWS, 70 mm LONG	2
6	M10 NUTS	2
7	M10 WASHERS	4

TOOLS NEEDED: 6 mm ALLEN WRENCH & 17 mm WRENCH

- ATTACH THE STAND LEGS (ITEM 2 & ITEM 3) AND THE STEEL SPACERS (ITEM 4) TO THE BARBELL STAND UPPER FRAME ASSEMBLY (ITEM 1) WITH THE SUPPLIED HARDWARE.
- TIGHTEN** THE HARDWARE.



POWERBLOCK®

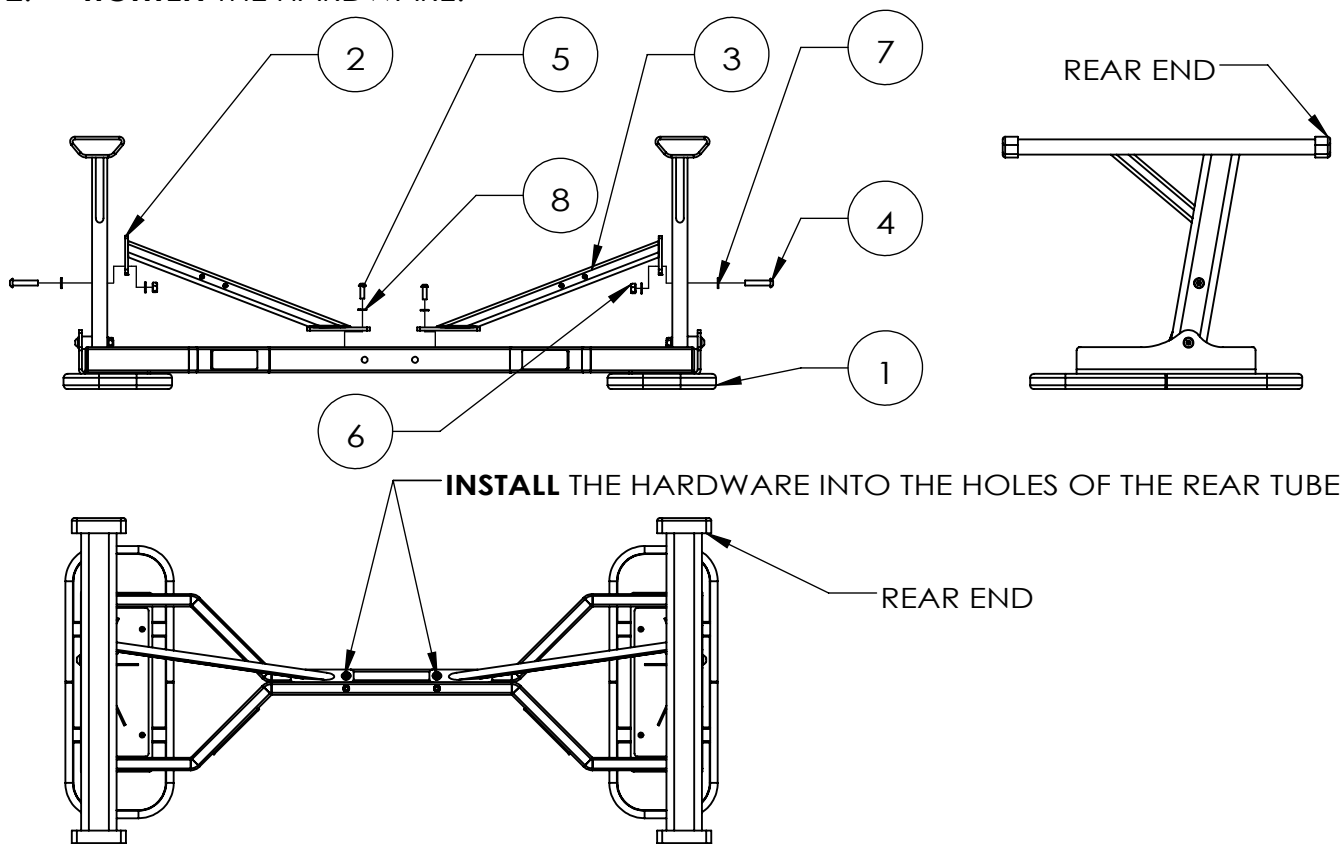
BARBELL STAND

ASSEMBLY STEP 3

ITEM NO.	DESCRIPTION	QTY.
1	BARBELL STAND ASSEMBLY	1
2	BARBELL STAND LEFT GUSSET WELDMENT	1
3	BARBELL STAND RIGHT GUSSET WELDMENT	1
4	M10 BUTTON HEAD SCREWS, 50 mm LONG	2
5	M8 BUTTON HEAD SCREWS, 25 mm LONG	2
6	M10 NUTS	2
7	M10 WASHERS	4
8	M8 WASHERS	2

TOOLS NEEDED: 5 mm ALLEN WRENCH & 6 mm ALLEN WRENCH & 13/17 mm WRENCH

1. ATTACH THE BARBELL STAND GUSSET WELDMENTS (ITEM 2 & ITEM 3) TO THE BARBELL STAND ASSEMBLY (ITEM 1) WITH THE SUPPLIED HARDWARE.
2. **TIGHTEN** THE HARDWARE.



POWERBLOCK®

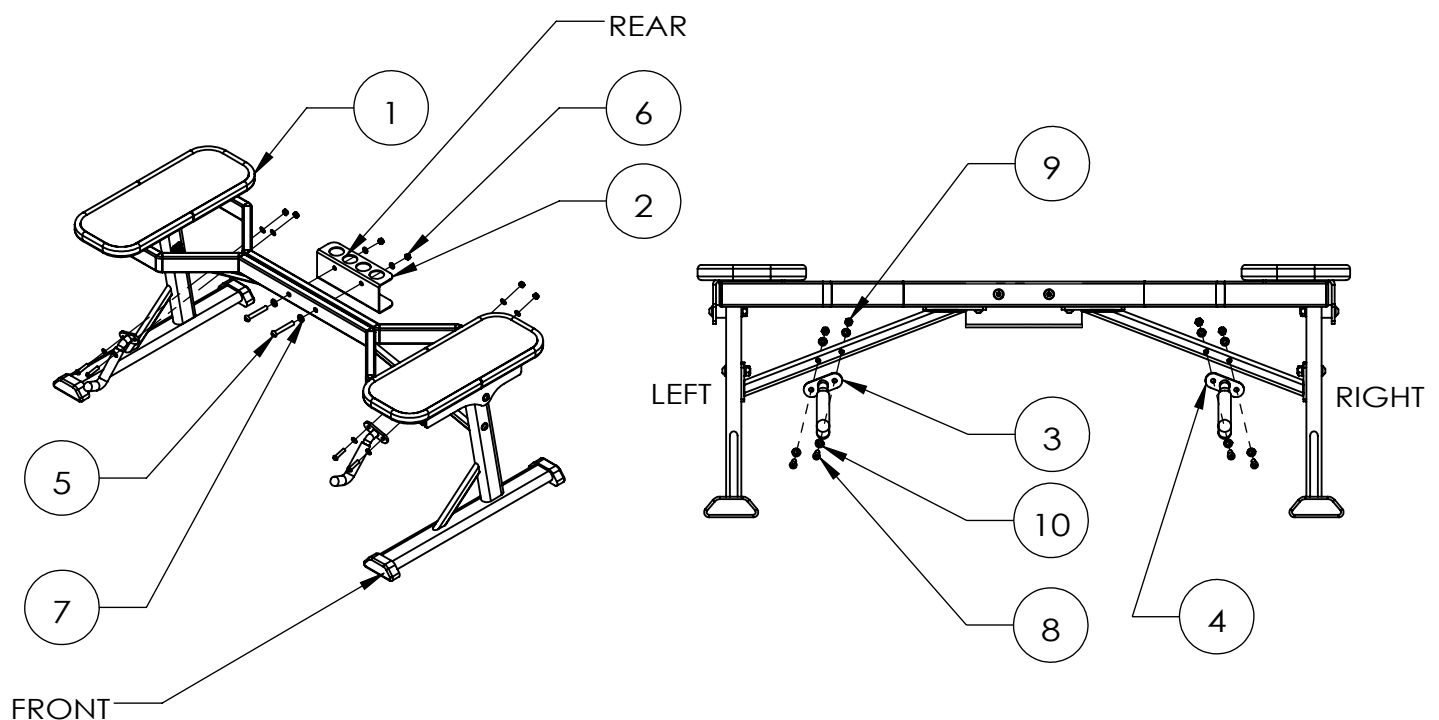
BARBELL STAND

ASSEMBLY STEP 4

ITEM NO.	DESCRIPTION	QTY.
1	BARBELL STAND	1
2	MICRO WEIGHT HOLDER	1
3	BARBELL LEFT HOOK	1
4	BARBELL RIGHT HOOK	1
5	M10 BUTTON HEAD SCREWS, 70 mm LONG	2
6	M10 NUTS	2
7	M10 WASHERS	4
8	M8 BUTTON HEAD SCREWS, 35 mm LONG	4
9	M8 NUTS	4
10	M8 WASHERS	8

TOOLS NEEDED: 5 mm ALLEN WRENCH & 6 mm ALLEN WRENCH & 13/17 mm WRENCH


1. ATTACH THE BARBELL HOOKS (ITEM 3 & ITEM 4) TO THE GUSSET WELDMENTS OF THE BARBELL STAND ASSEMBLY (ITEM 1) WITH THE SUPPLIED HARDWARE. **TIGHTEN** THE HARDWARE.
2. ATTACH THE MICRO WEIGHT HOLDER (ITEM 2) TO THE REAR END OF THE BARBELL STAND ASSEMBLY (ITEM 1) WITH THE SUPPLIED HARDWARE. **TIGHTEN** THE HARDWARE.




IMPORTANT SAFETY INSTRUCTIONS

1. Read and fully understand all instructions contained in this manual prior to using the product. Be alerted to the possibility of injury. Do not be careless.
2. Inspect the stand prior to each use. Do not use a stand with worn, damaged, or loose parts, fasteners or hardware.
3. MAX LOAD: 300 lb.
4. Before beginning your workout, make certain that your surroundings are free from potential interference.

 **WARNING:** Injury may occur if stand top trays are not emptied prior to moving the stand. Stand should be moved in a slow and controlled manner.

 **WARNING:** Never allow children to use or play near this equipment. Anyone under the age of 18 must always have parental supervision and instruction on the use of these products.

 **WARNING:** Injury may occur if stand is not assembled per the instruction manual. If you have any questions regarding the assembly, please contact customers service at 1-800-997-3999 .

 **WARNING:** Use the stand on a FLAT AND FIRM SURFACE ONLY. Damage to the products and potential injury may occur.