

POWERBLOCK®

POWER/POWERMAX STAND ASSEMBLY COVER PAGE



POWER STAND



POWERMAX STAND

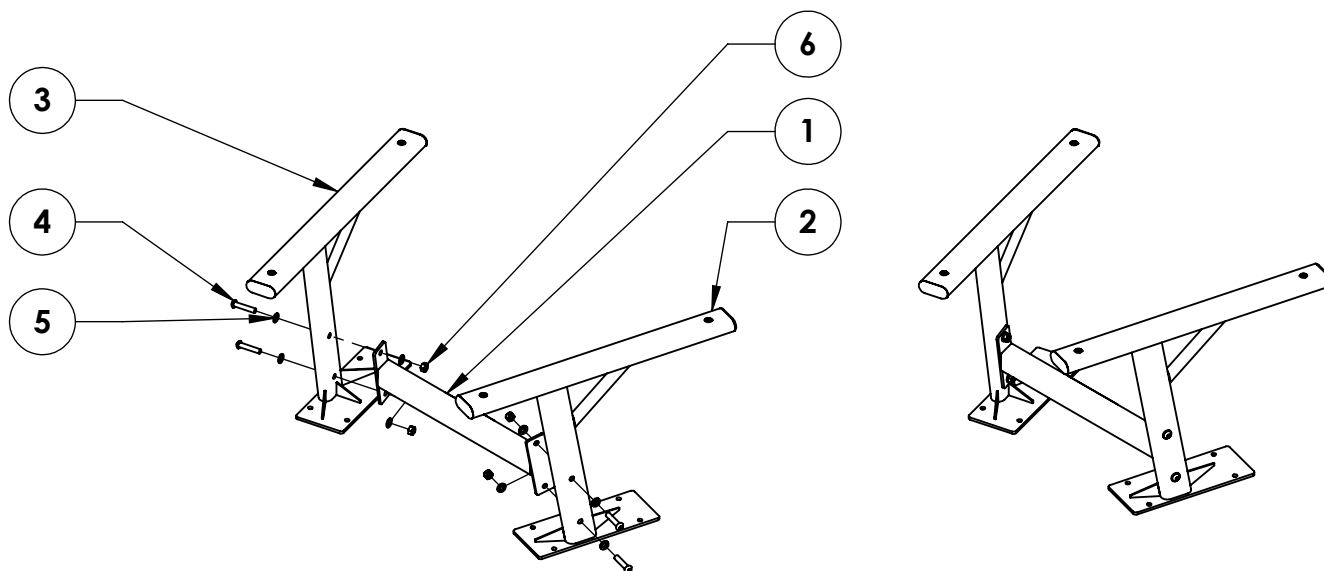
POWERBLOCK®

POWER/POWERMAX STAND ASSEMBLY STEP ONE

ITEM NO.	DESCRIPTION	QTY.
1	STAND SPACER SUPPORT	1
2	STAND LEFT LEG	1
3	STAND RIGHT LEG	1
4	M10 - 1.5 mm X 50 mm BUTTON HEAD SCREW	4
5	M10 WASHER	8
6	M10 - 1.5 mm LOCK NUT	4

TOOLS NEEDED: ONE 17 mm WRENCH AND ONE 6 mm HEX ALLEN WRENCH.

1. PLACE BOTH LEGS UPSIDE DOWN ON A FLAT SURFACE.
2. ATTACH LEFT LEG (ITEM 2) TO SPACER SUPPORT (ITEM 1) WITH SUPPLIED HARDWARE.
DO NOT TIGHTEN HARDWARE.
3. ATTACH RIGHT LEG (ITEM 3) TO SPACER SUPPORT (ITEM 1) WITH SUPPLIED HARDWARE.
4. **TIGHTEN ALL HARDWARE.**



POWERBLOCK®

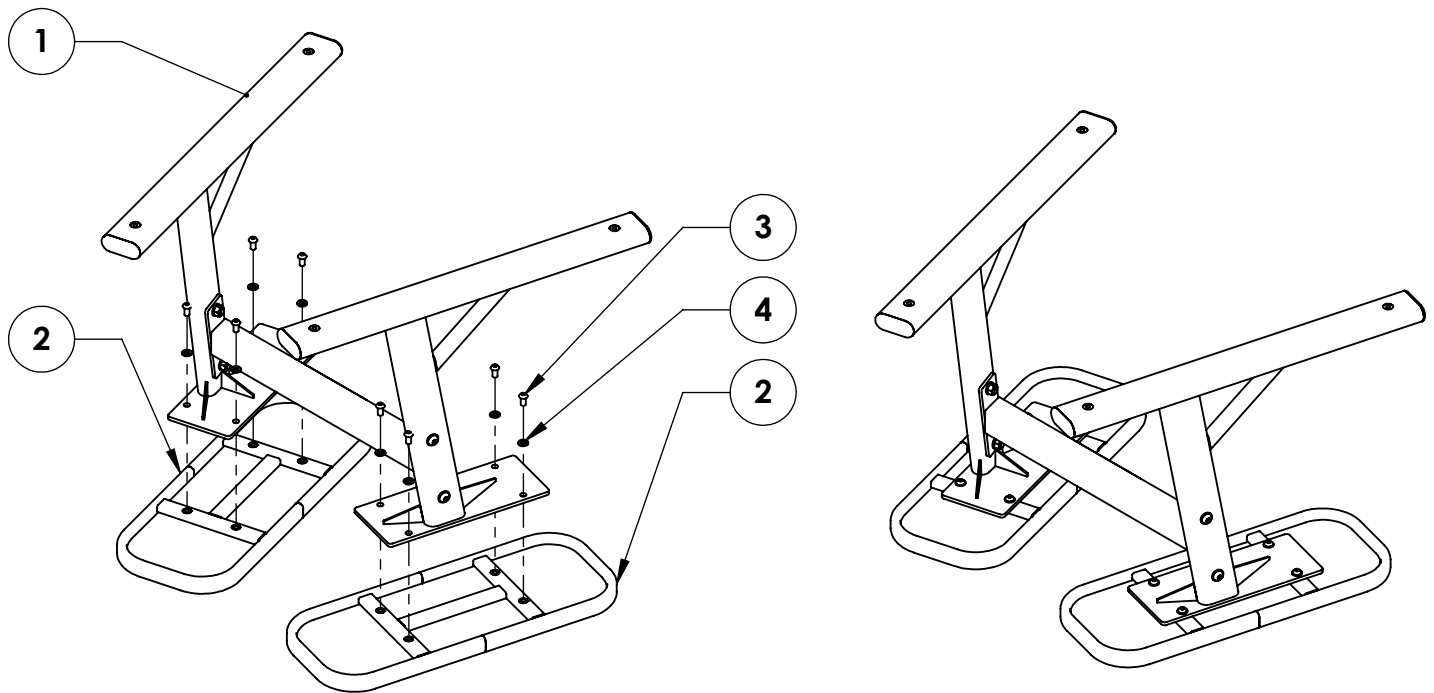
POWER/POWERMAX STAND ASSEMBLY STEP TWO

ITEM NO.	DESCRIPTION	QTY.
1	STAND LEG ASSEMBLY	1
2	STAND TRAYS	2
3	M8 BUTTON HEAD SCREWS	8
4	M8 WASHERS	8

TOOLS NEEDED: ONE 5 mm ALLEN WRENCH.

1. PLACE BOTH STAND TOPS UPSIDE DOWN ON A FLAT SURFACE.
2. ATTACH BOTH TRAYS (ITEM 2) TO LEG ASSEMBLY (ITEM 1) WITH SUPPLIED HARDWARE.
3. **TIGHTEN ALL HARDWARE.**

FOR USE ON FIRM AND FLAT SURFACE ONLY.



POWERBLOCK®

POWER/POWERMAX STAND ASSEMBLY STEP THREE

ITEM NO.	DESCRIPTION	QTY.
1	LEVELING MOUNTS	4

TOOLS NEEDED: NONE.

1. APPLY LEVELING MOUNTS (ITEM 1) TO THE BOTTOM TUBES.
2. FLIP THE STAND AND ADJUST THE HEIGHT OF THE LEVELING MOUNTS BY LOOSENING OR TIGHTENING THE THREADS.

FOR USE ON FIRM AND FLAT SURFACE ONLY.

